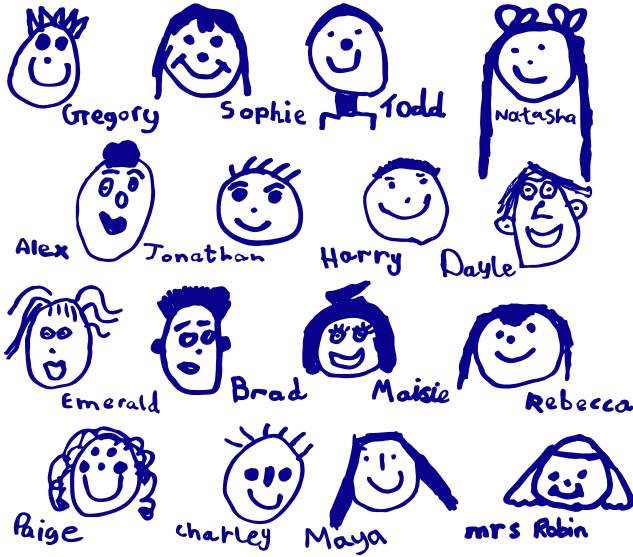


# CHRIS ASTON CERAMICS

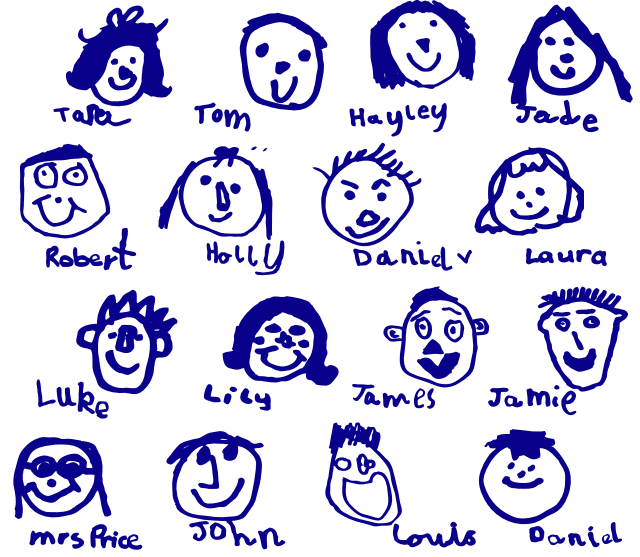
4 High Street • Elkesley • nr Retford • Nottinghamshire • DN22 8AJ • t: 01777 838391 • email: chris@chrisastonceramics.co.uk

## SCHOOL YEAR CLASS SELF PORTRAITS



**Edward  
Francis  
School**

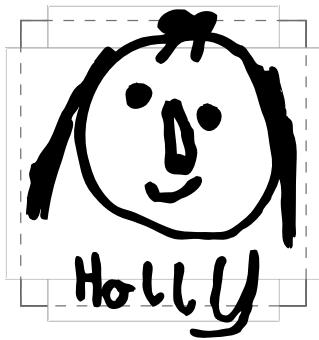
Example of  
finished  
mug design



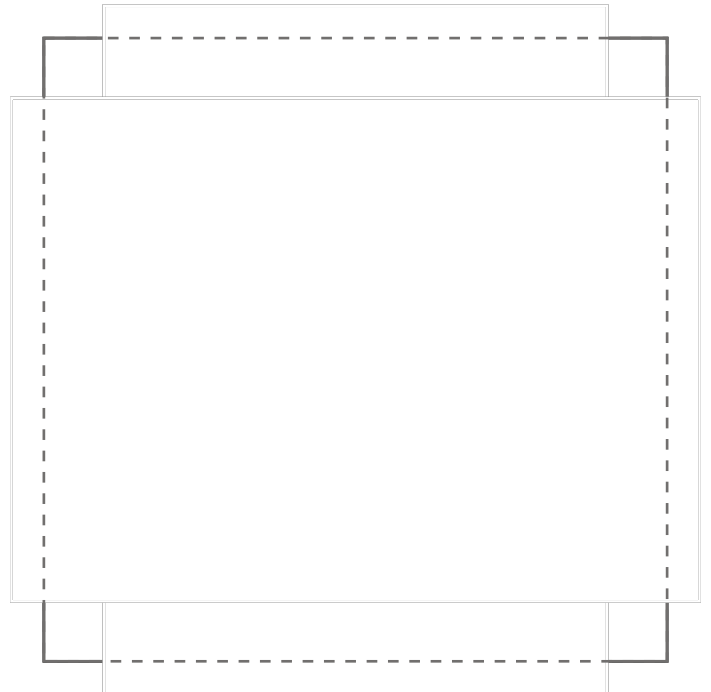
### TEACHERS NOTES

We can print up to 35 faces with names on the mug print area. Encourage the use of solid lines, since these will scan the best when the artwork is being prepared. Use a fine black fibre tip pen which produces a dense black line on paper. Do not use pencil. The name signature writing needs to be clear and open as the letters a,b,d,e,g,o,p & q can block in very easily when reduced in size. Also please ensure that the letters "i and j" are dotted and that lettering is not bunched up. Following these guidelines will help to save time on re touching and redrawing the artwork and lettering to a minimum. Send the pictures to us by post and we will scan, reduce them in size and arrange them to fit the print area of the mug and email a copy proof for your approval. The pictures can be returned to you if requested. If you need any advice email [chris@chrisastonceramics.co.uk](mailto:chris@chrisastonceramics.co.uk) or phone 01777 838391 and we will answer any questions you may have.

## Draw a picture of yourself to be printed on a class mug



Draw your portrait in the space on the right. Use a black felt tip pen to draw, then write your name clearly and carefully underneath the picture as in the two examples.



Name.....Age.....  
Class.....Date.....